



MINISTÉRIO DA CIÊNCIA, TECNOLOGIA, INOVAÇÕES E COMUNICAÇÕES
INSTITUTO NACIONAL DE PESQUISAS ESPACIAIS



The 37th International Symposium
on Remote Sensing of Environment
Earth Observation for Development and Adaptation to a Changing World
Tshwane, South Africa, 8 - 12 May 2017

EARTH OBSERVATION AT INPE

Towards Sustainable Development Goals (SDGs)

Leila Fonseca

Earth Observation Directorate

National Institute for Space Research

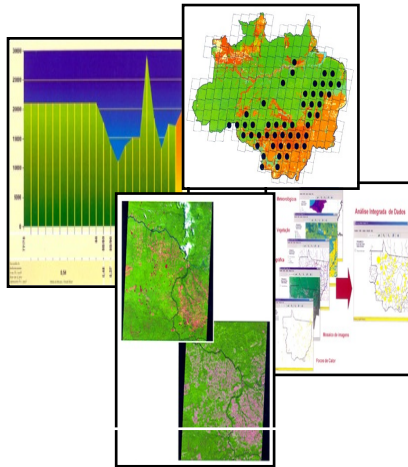
leila.fonseca@inpe.br



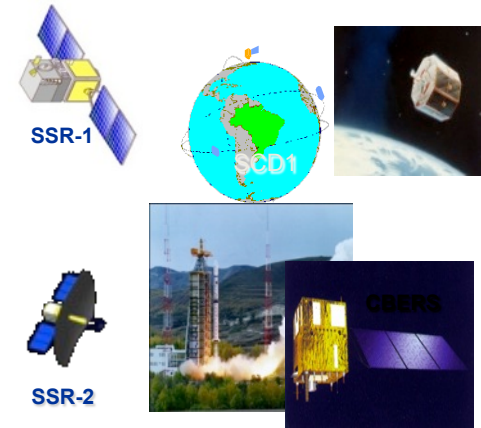
Research, Applications and Technological areas



Space Engineering & Technology



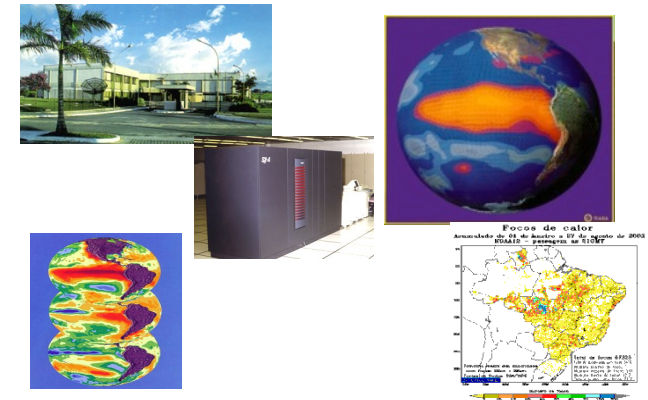
Earth Observation



Space and Atmospheric Sciences

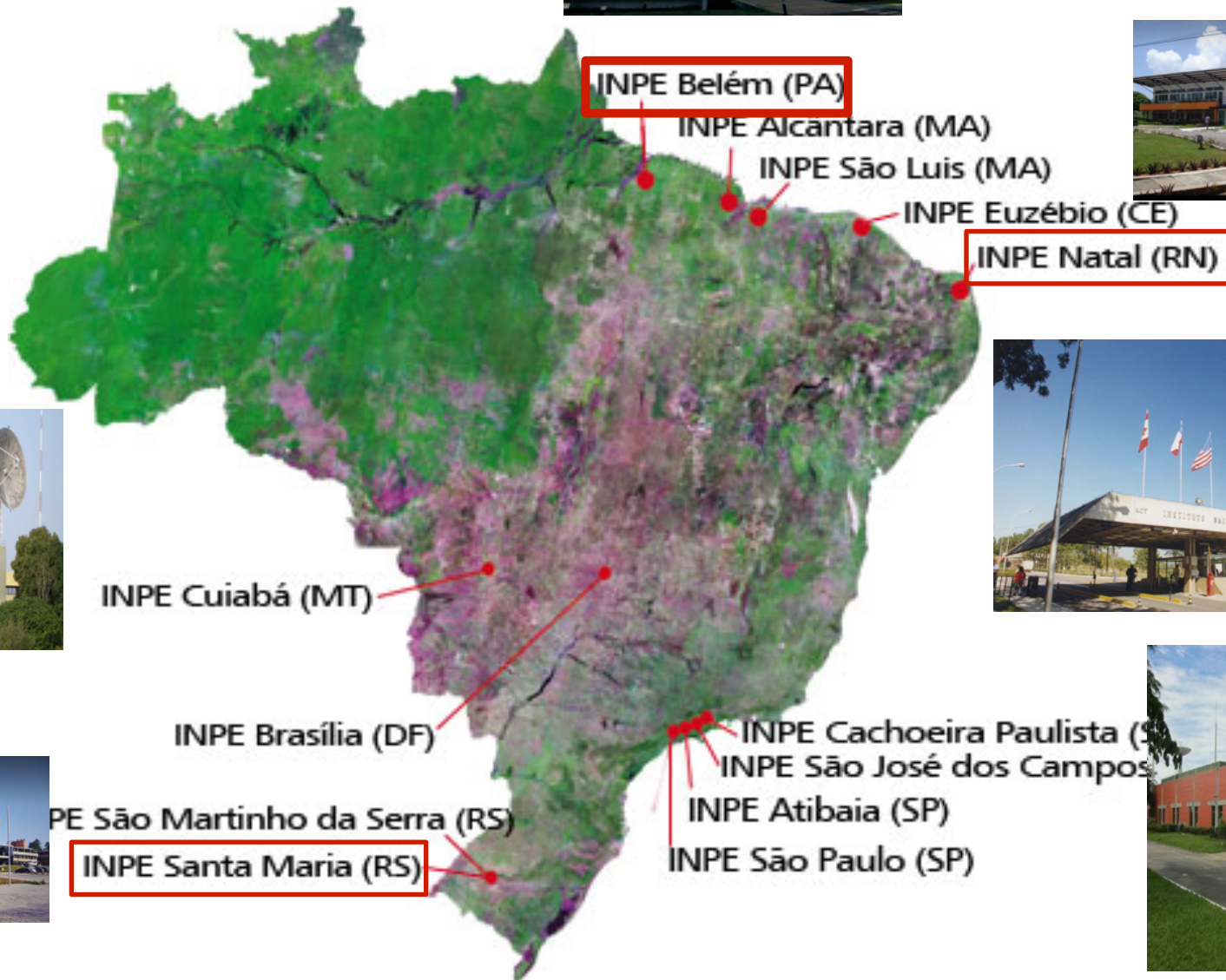


Earth System Sciences



Weather Forecast and Climate Studies

INPE Facilities



People at INPE



Personnel – 3000

Staff: ~980

Research: 17%

Development: 47%

Administrative: 36%

Qualification:

MsC: 15%

Dr: 22%

Scholarship

Graduate students

Trainees

Visiting Researchers

Outsourcing

INPE's Earth Observation contribution to the Sustainable Development Goals



Regarding SDGs, earth observation applications deliver information for all citizens, organizations and governments, to help make appropriate decisions, and ultimately improve people's lives.



Biodiversity



Natural Disaster



Water Resources



Agriculture



Public Health



Urban Planning

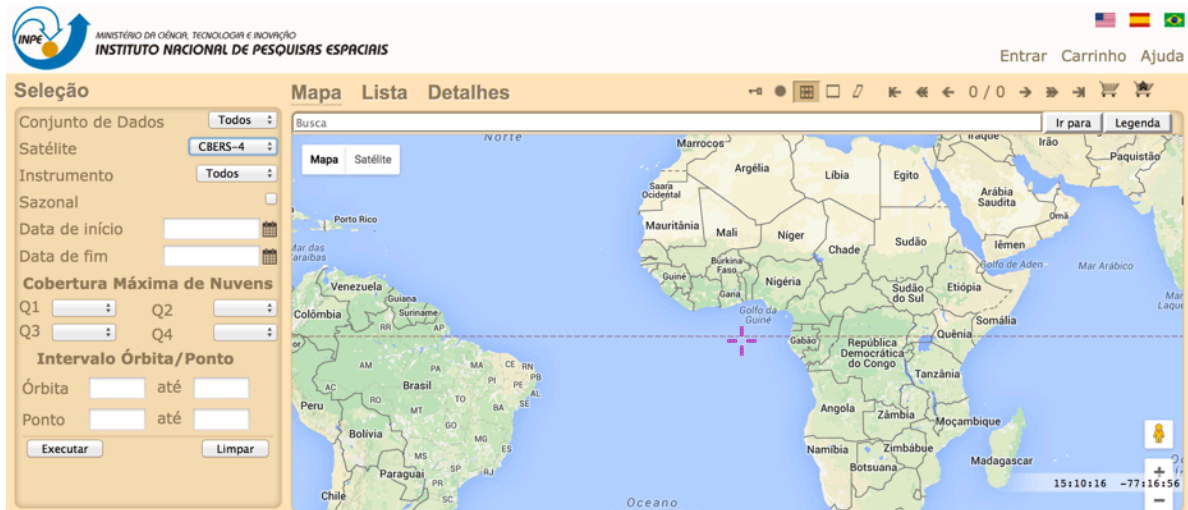
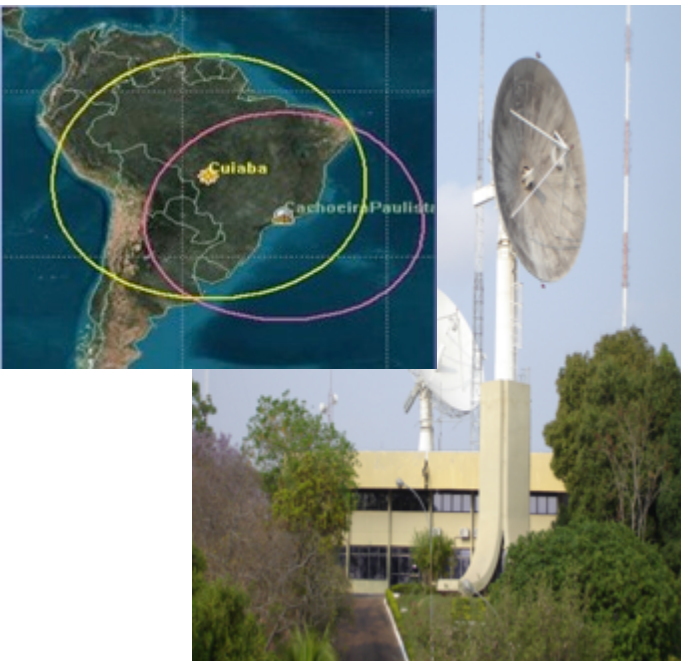
Availability and access to data is necessary

INPE provides EO data distribution under free data policy

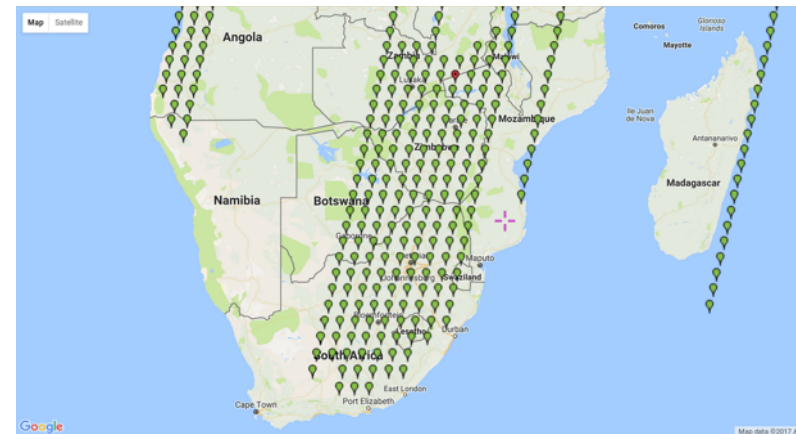
EO data is available through INPE's catalog at no cost (<http://www.dgi.inpe.br/CDSR/>)

Data Center Receives, archives, process and distribute satellite images: CBERS-4, LANDSAT-7, Landsat-8, Resourcesat-2, DMC, DEIMOS, NOAA-15, NOAA-18, NOAA-19, AQUA, TERRA, S-NPP, GOES-13, MetOp-B, GOES-16 (GeonetCast)

More than 1.400.000 scenes distributed at no cost in the last 5 years
Total of 1,5 Pb stored



An initiative for recording CBERS-4 images in Africa
whenever there is no conflict with Hartebeeshoek ground station that
records CBERS-4 raw data

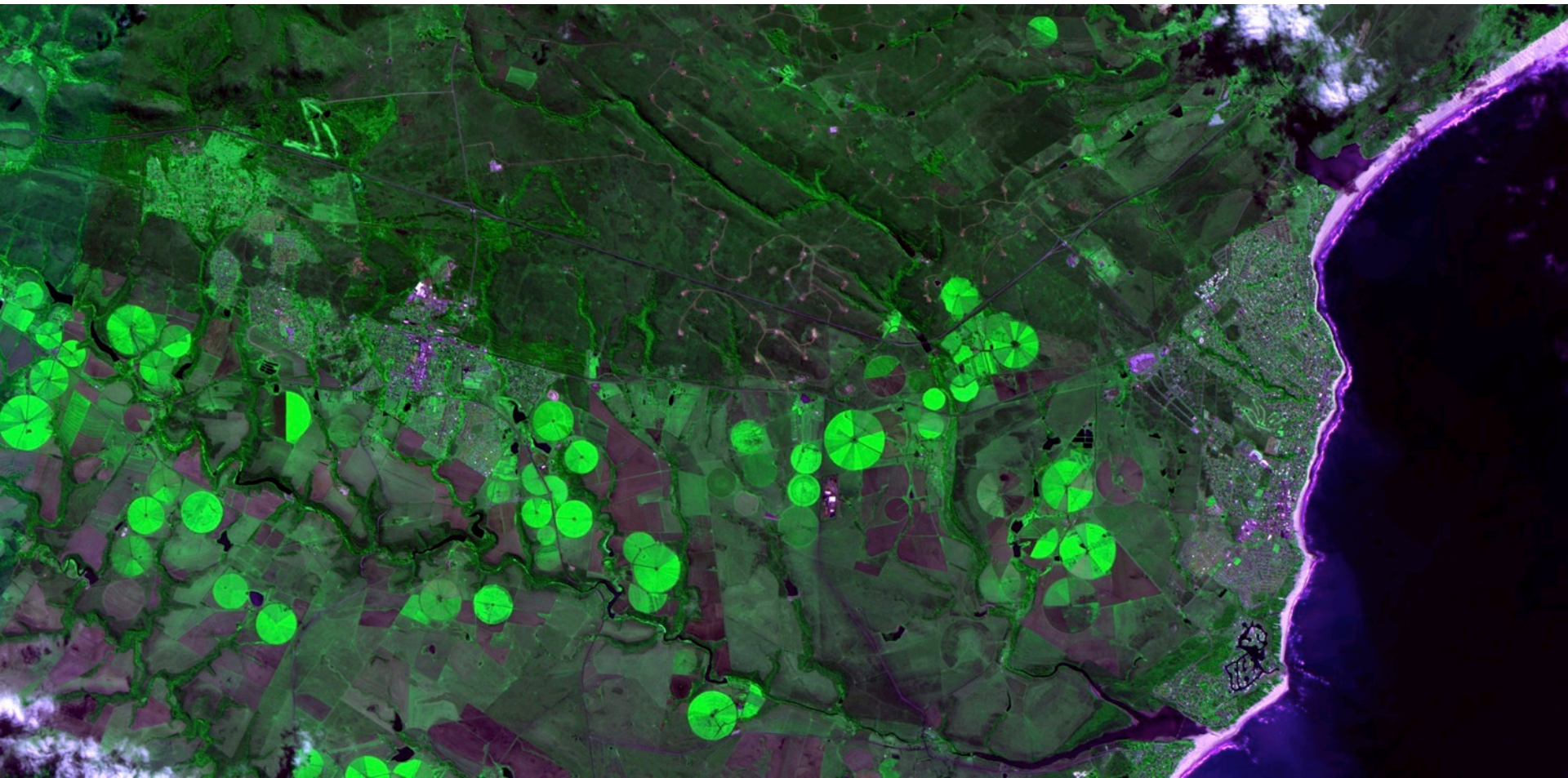




CBERS-4 AWFI
2015-03-15, RGB151613, Pretoria crop region

CBERS-4 PAN10 (10 m)

2015-03-24, RGB342, Humansdorp, Jeffreys Bay



CHARTER- International Charter Space and Major Disasters

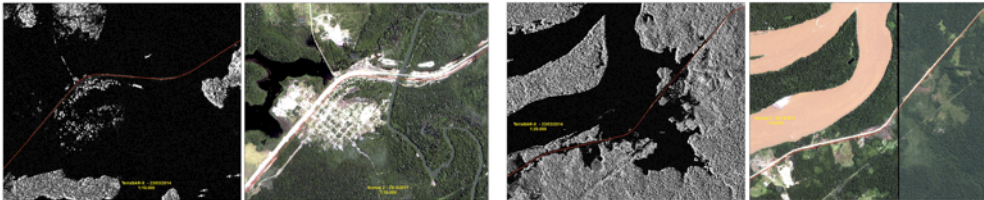
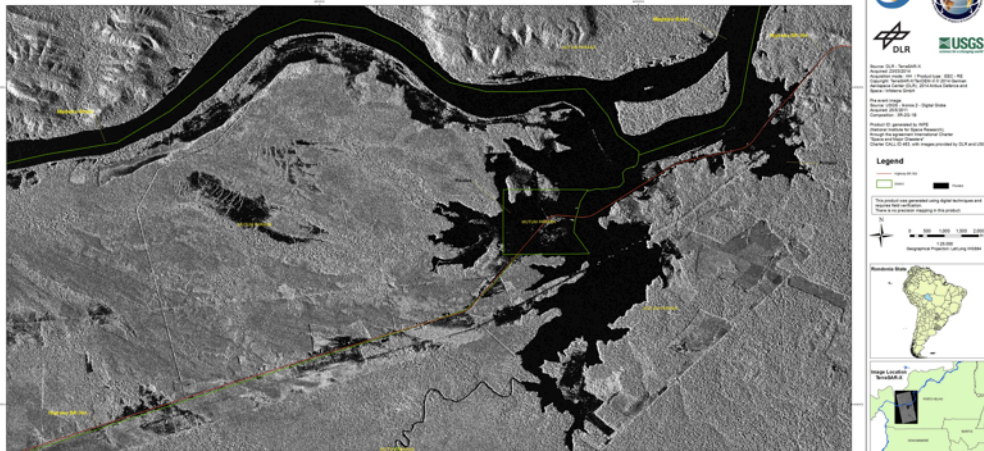


INPE is partner with CHARTER

CBERS-4 records image in emergency situations.

Brazil and China agreed to record satellite imagery and made it available through Charter.

BRAZIL - FLOOD - Porto Velho / RO - District Mutum-Paraná - MAR/2014

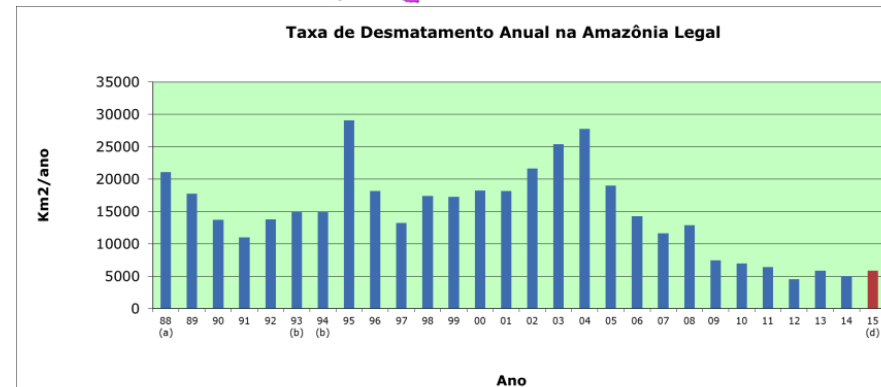
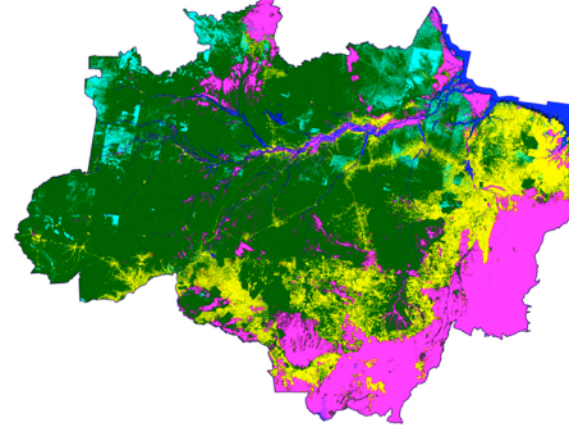
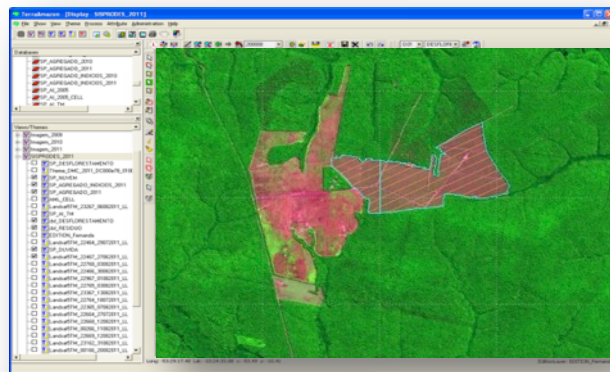


Destruction and flooding caused by tropical cyclone Enawo, which struck Madagascar on 7 March, 2017

Flood in Madeira River, Brazil

Program for Satellite Monitoring of the Brazilian Amazon and Other Biomes

INPE provides data and information (land use and land cover mapping) to government (law enforcement) to prevent and control illegal deforestation activities in the Amazonia Forest since 1988. **PRODES: yearly clear-cut deforestation**



DETER- Early warning system of deforestation and forest degradation

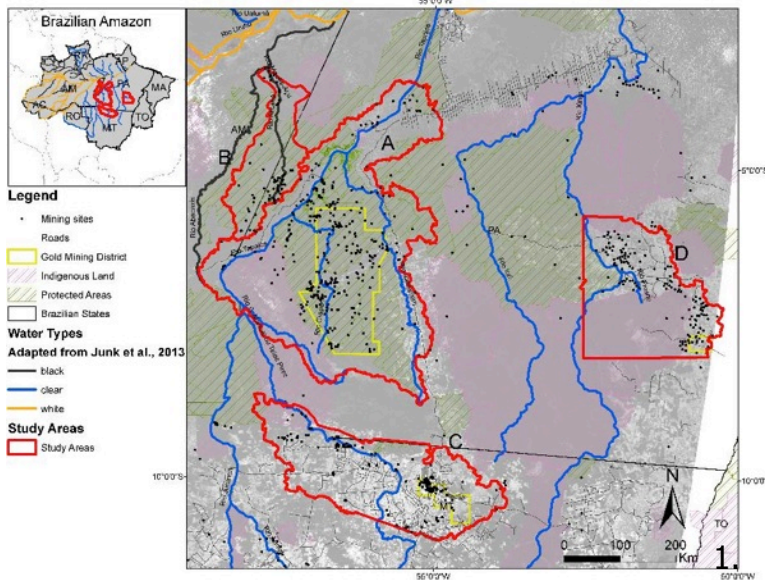


INPE Delivers results to IBAMA* within 1-5 days after acquisition period
* Brazilian environmental law enforcement authority at the federal level

Monitoring Amazon basin in Brazil

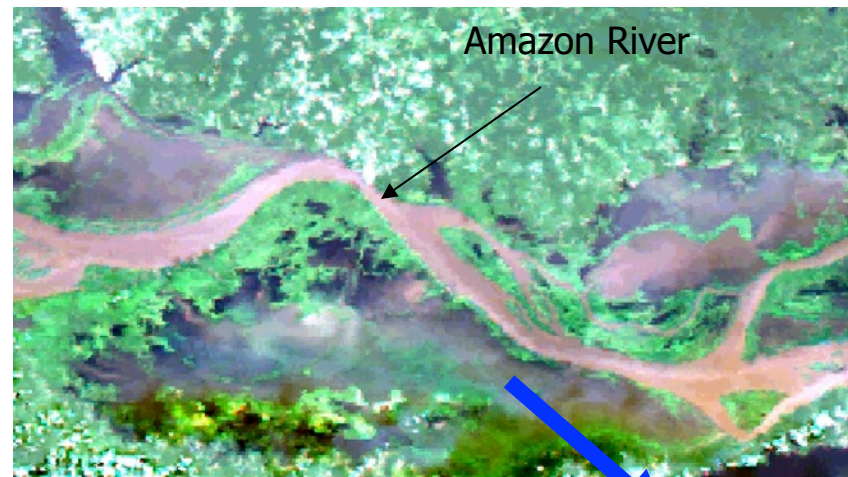
Water quality changes with excess of nutrient runoff from poorly managed crop fields and pastures, metal pollution from mining, organic pollution from discharge of untreated human and animal wastes, waterborne diseases.

Monitoring gold mining impact using multi-satellite images



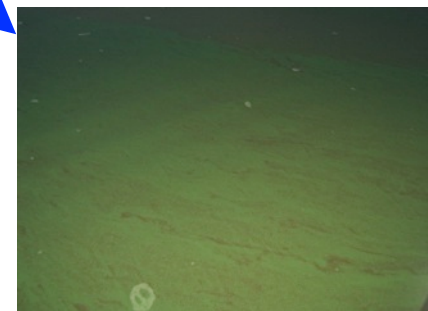
Amanã River, Peixoto de Azevedo
River Xingu River.

Source: Lobo et al. 2017



MODIS true color composite

1. Active mining
2. Top soils dominated
3. by inorganic fine particles
4. rivers detectable by medium/high
5. spatial resolution images (≤ 30 m wide).

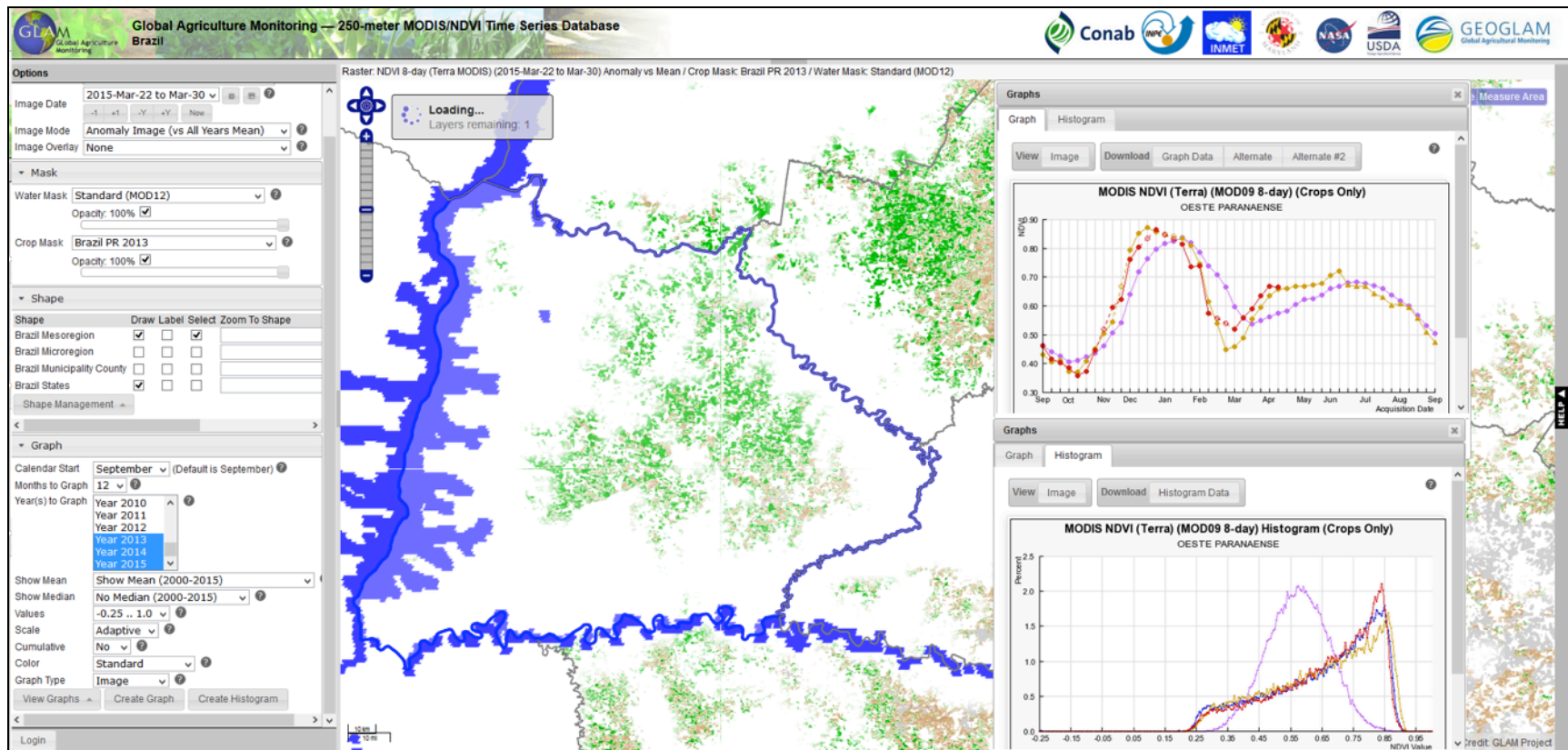




GEOGLAM – Crop Monitor

INPE has and agenda for multilateral and bilateral cooperation.

In Brazil, CONAB (Brazilian National Food Supply Company) and INPE are part of the crop monitor assessment conducted by GEOGLAM.



INPE provides Open Source Geotechnologies with no use of restrictions (www.dpi.inpe.br)

To ensure end users in Africa and other developing countries can fully exploit the EO data and SDGs applications.



General purpose GIS's



TerraLib

Library to develop geographical applications



TerraMA²

Environmental Risks
Monitoring, Analysis
and Alert



TerraME

Environmental
Modelling System



TerraHidro

Distributed
Hidrological
Modelling



Data Mining System



Remote sensing
imagery vector editor

Capacity Building in Africa



4 QUALITY EDUCATION



Capacitree Program: Program to train end users to use EO data, remote sensing and image processing methods for forest monitoring

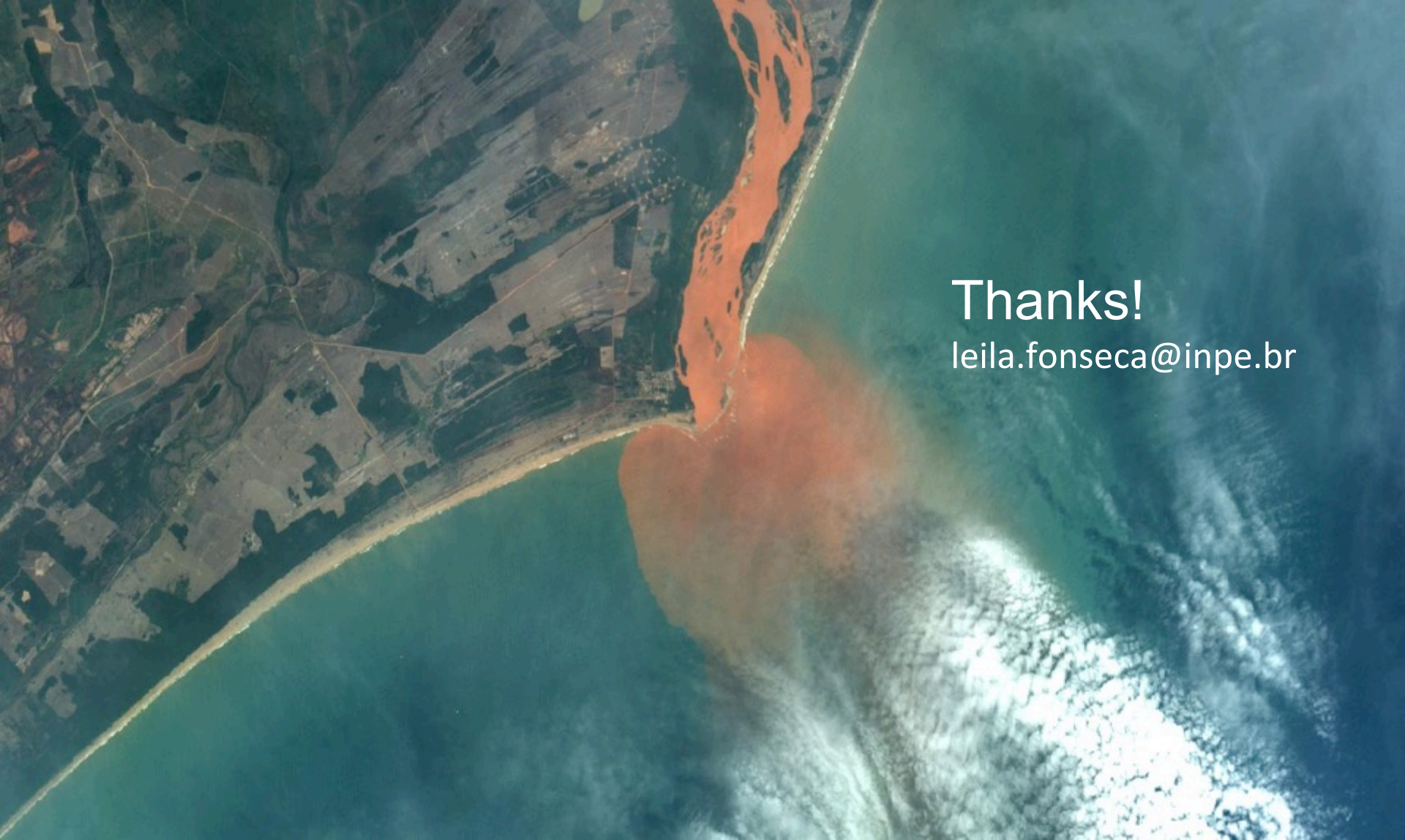
Basic courses on remote sensing, digital image processing and geoprocessing

TerraAmazon: multiuser GIS platform based on TerraLib library (open source) for large-scale land change monitoring.

Tutorials and Instructors (Portuguese, English, French and



South Africa, Algeria, Burkina Faso, Chad, Ghana, Kenya, Democratic Republic of Congo, Sao Tome and Principe, Morocco, Equatorial Guinea, Burundi, Central African Republic, Cameroon, Tanzania, Tunisia, Zambia, Guinea and Gabon



Thanks!

leila.fonseca@inpe.br

Satellite CBERS-4 MUX - 20 m, acquired on 12/7/2015, showing the ore debris from Samarco disaster flowing into the ocean via Rio Doce